


CP-D70DW/CP-D707DW

SINGLE-DECK PRINTER

DOUBLE-DECK PRINTER

DIGITAL COLOR
PHOTO PRINTERS

 **MITSUBISHI
ELECTRIC**
PHOTO IMAGING



CP-D70DW



Print sizes:
3.5 x 5", 4 x 6",
5 x 7", and
6 x 8"

Compact Sized High Speed, High Capacity Instant Photo Printers Designed For A Variety Of Operations.

KEY FEATURES

- Ultra-fast, high capacity printers
- Compact design
- 300 dpi high-density, high-efficiency thermal head
- High resolution photo quality prints
- Jam-free, roll-type mechanism
- Dust-free photos
- Built-in energy saving mode reduces power consumption to less than 1 watt
- Easy-to-use, convenient front access for loading media and ink sheet
- High-speed USB 2.0
- Long lasting reliability and quality

Mitsubishi's single-deck CP-D70DW and double-deck CP-D707DW are compact sized digital photo printers designed for a variety of photo operations. Both printers offer the same high quality output and reliability that Mitsubishi's other models provide, but with a much smaller footprint. Plus, the CP-D707DW is the only printer of its size that can be filled with two different types of paper. With a space-saving front-loader and simple filing unit extension, the printers are easy to use and highly efficient. Both models have a print resolution of 300 dpi, along with a new image-processing algorithm to enhance natural sharpness. They are also designed for dust-free photos and efficient printer throughput, and have a built-in energy saving mode which reduces power consumption to less than 1 watt. With a robust feature set and compact size, Mitsubishi's single-deck CP-D70DW and double-deck CP-D707DW digital color photo printers will transform professional photo printing.



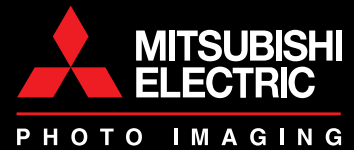
CP-D707DW

If You Can Create It, We Can Print It.

CP-D70DW / CP-D707DW

SINGLE-DECK PRINTER DOUBLE-DECK PRINTER

DIGITAL COLOR PHOTO PRINTERS



PERFORMANCE AND DESIGN VERSATILITY

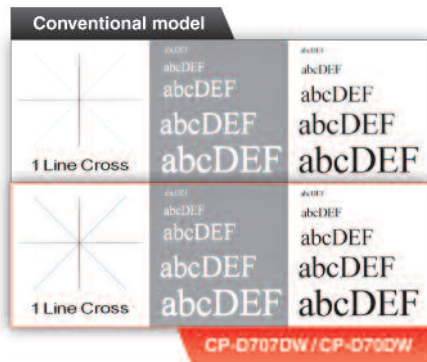
- Choose single-deck or double-deck configuration
- Compact, space saving design
- Supports multiple print sizes: 3.5 x 5", 4 x 6", 5 x 7", and 6 x 8"
- High speed, high capacity
- Dust-free photos and efficient printer throughput
- Built-in energy saving mode reduces power consumption to less than 1 watt
- 300 dpi resolution
- Jam-free, roll-type mechanism
- High speed USB 2.0 interface
- Mitsubishi quality and reliability

DESIGNED FOR DUST-FREE PHOTOS AND EFFICIENT PRINTER THROUGHPUT

The CP-D70DW/CP-D707DW printers are designed to distribute airflow separately to the power supply and the thermal printing head. This effective air cooling increases the throughput while reducing print contamination.

HIGH RESOLUTION PRINTS CLEARER AND SHARPER THAN EVER BEFORE

The CP-D70DW/CP-D707DW incorporates newly developed image processing methods, making it possible to reproduce smooth edges and natural images. High resolution prints are generated that are very clear and sharper with little or no color blurring.



SPECIFICATIONS

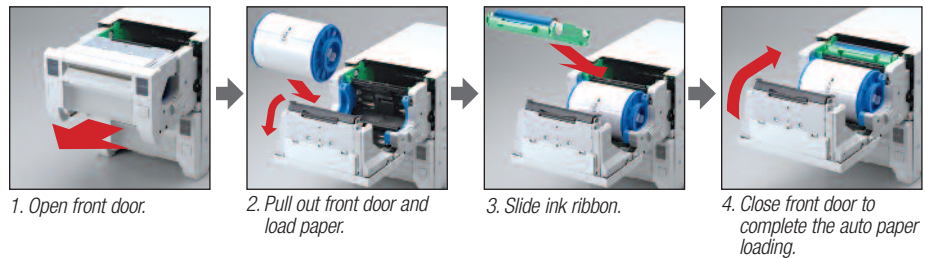
Model	CP-D70DW	CP-D707DW
Print Deck	Single-deck	Double-deck
Print Method	Dye sublimation thermal transfer	
Gradations	256 (8-bit) for each color	
Print Resolution	300 dpi	
Capacity	3.5 x 5": 450 prints 4 x 6": 400 prints 5 x 7": 230 prints 6 x 8": 200 prints	3.5 x 5": 900 prints 4 x 6": 800 prints 5 x 7": 460 prints 6 x 8": 400 prints
Printing Time*	3.5 x 5": Approx. 7.7 sec. 4 x 6": Approx. 8.4 sec. 5 x 7": Approx. 12.7 sec. 6 x 8": Approx. 14.5 sec.	3.5 x 5": Approx. 5.4 sec. 4 x 6": Approx. 5.9 sec. 5 x 7": Approx. 9.4 sec. 6 x 8": Approx. 10.6 sec.
Interface	High-speed USB 2.0	
Driver Software	Windows® XP/Vista/7 (32-bit), Windows/Vista/7 (64-bit)**, MAC OS X	
Memory Size	4 pictures (for 4 x 6" size)	8 pictures (for 4 x 6" size)
Dimensions (W x D x H)	10.8 x 17.6 x 6.7"	10.8 x 17.6 x 13.4"
Weight	Approx. 26.5 lbs.	Approx. 48.5 lbs.
Power Supply	220-240VAC, 50/60Hz, 120VAC, 50/60Hz	
Power Consumption	2.4A (220 - 240VAC, 50/60Hz) 4.6A (120VAC, 50/60Hz)	2.6A (220 - 240VAC, 50/60Hz) 5.1A (120VAC, 50/60Hz)
Accessories	Power cords (for 120V and 230V), ink cassette (1), CD-ROM (1), paper flange (1 set), spacers (2), quick set up guide (1), paper strip bin (1), paper tray (1), cable tie (2), securing band (1), screw for securing band (2)	Power cords (for 120V and 230V), ink cassette (2), CD-ROM (1), paper flange (2 sets), spacers (4), quick set up guide (1), paper strip bin (2), paper tray (2), cable tie (2), securing band (1), screw for securing band (2)

* As of September 2010, excluding data transfer time, and when the same size is printed with the upper and lower decks simultaneously (CP-D707DW only).

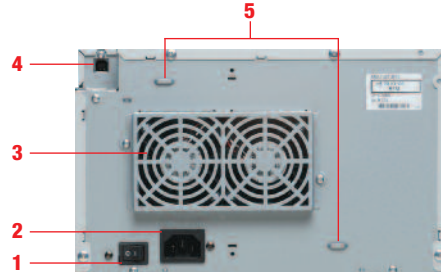
**Windows Vista/7 64-bit, Mac OS X printer drivers will be available on the website.

EASE OF USE

The CP-D70DW/CP-D707DW is designed for simple operation and fast media loading.



REAR PANEL CP-D70DW



1. Power switch
2. Power socket (AC line)
3. Fan cover
4. USB terminal
5. Securing holes for cable ties

©2010 Mitsubishi Digital Electronics America, Inc. Standard features, options and specifications subject to change without notice. Microsoft, Windows and the Windows logo are registered trademarks of the Microsoft Corporation. Facebook is a registered trademark of Facebook, Inc. The Twitter name, logo, Twitter T, and Twitter blue bird are trademarks of Twitter, Inc. in the United States and other countries. All other trademarks or registered trademarks are the property of their respective holders.



Mitsubishi Digital Electronics America, Inc.
Imaging Products Division
9351 Jeronimo Road, Irvine, CA 92618
Toll Free: 888-307-0388
ipdinfo@mdea.com

www.mitsubishi-imaging.com/photo

Technical Support:
Toll Free: 888-307-0309
Email: tsupport@mdea.com

Canada:
Mitsubishi Electric Sales Canada Inc.
Information Technologies Group
Markham, Ontario
905-475-7728

www.MitsubishiElectric.ca

Find us on Facebook®
@Mitsubishi-Photo-Imaging

Follow us on Twitter™
@MitsubishiPhoto

Visit our YouTube Channel
@MitsubishiPhotoUSA

